



**HIGH-PERFORMANCE SPRAYERS**  
MADE OF STEEL

# HIGH-PERFORMANCE SPRAYERS

## MADE OF STEEL

Made in  
Germany

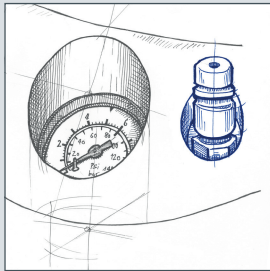
The high-performance GLORIA Profiline sprayers made of robust steel are convincing due to their equipment and their wide range of applications. Most of the devices are equipped with Viton® seals, which have a high thermal and chemical resistance. This allows the devices to withstand oil-containing and aggressive spray media and extreme temperature influences. With a capacity of 5 or 10 litres, they offer maximum quality and comfort for every application. The maximum operating pressure of 6 bar ensures a powerful helper.

In order to protect the container material against corrosion, the sprayers made of steel are equipped with a high-quality internal plastic coating. This prevents aggressive spray media from coming into contact with the container and simplifies cleaning. All devices are TÜV and GS tested - proof of safety in applications and long-term usability.



	405 T PROFILINE	405 TK PROFILINE	405 TKS PROFILINE	410 T PROFILINE
<b>ART.-NO.:</b>	000406.0000	000407.2400	000407.0000	000412.0000
<b>EAN CODE</b>	404 643 600 0227	404 643 600 0531	404 643 600 0234	404 643 600 0265
<b>MAX. OPERATING PRESSURE</b>	6 bar	6 bar	6 bar	6 bar
<b>FILLING CAPACITY</b>	5 L	5 L	5 L	10 L
<b>CONTAINER MATERIAL</b>	Steel with high-quality plastic interior lining	Steel with high-quality plastic interior lining	Steel with high-quality plastic interior lining	Steel with high-quality plastic interior lining
<b>TÜV AND GS TESTED</b>	●	●	●	●
<b>PRESSURE GAUGE</b>	●	●	●	●
<b>SAFETY RELIEF AND VENT VALVE</b>	●	●	●	●
<b>CARRYING SYSTEM</b>	Padded shoulder strap	Padded shoulder strap	Padded shoulder strap	2 padded shoulder straps with quick-release system and back pad
<b>SPIRAL HOSE</b>			●	
<b>COMPRESSOR CONNECTION</b>		●	●	
<b>OIL-PROOF VERSION</b>	●	●	●	●
<b>MATERIAL OF SEALS</b>	Viton®	Viton®	Viton®	Viton®

# QUALITY IN DETAIL



## COMPRESSOR CONNECTION

An integrated compressor connection (405/410 TK und TKS sowie 505/510 TK) ensures automatic pressure build-up without manual pumping.



## STANDARD EQUIPMENT



### OIL-PROOF VERSION

In addition to regular use and extreme temperature influences, sprayers in particular must withstand oil-containing and aggressive spray media. This is why only high-quality materials are used in the production of GLORIA Profiline models. Most of the sprayers are equipped with Viton® seals, which, unlike conventional seals, have high thermal and chemical resistance.

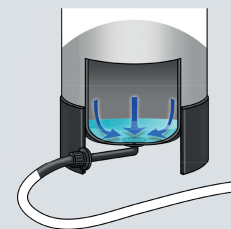


410 TI PROFILINE	410 TK PROFILINE	410 TKS PROFILINE
000414.0000	000416.2400	000416.0000
404 643 600 0319	404 643 600 0548	404 643 600 0333
6 bar	6 bar	6 bar
10 L	10 L	10 L
Steel with high-quality plastic interior lining	Steel with high-quality plastic interior lining	Steel with high-quality plastic interior lining
●	●	●
●	●	●
●	●	●
2 padded shoulder straps with quick-release system and back pad	2 padded shoulder straps with quick-release system and back pad	2 padded shoulder straps with quick-release system and back pad
	●	●
	●	●
Perbunan®	Viton®	Viton®



### BRASS FLAT JET NOZZLE TYPE 8004E (SPRAY ANGLE 80°)

Ideal for surface treatment



### RESIDUAL DRAINAGE

Thanks to the hose connection at the bottom of the container, the applied medium is used up to the last drop - a residual amount does not remain in the container.



MAXIMUM  
PERFORMANCE  
GUARANTEED



#### TÜV AND GS TESTED

All Profiline high-performance sprayers are subjected to complex internal testing procedures at GLORIA and are also tested by TÜV Rheinland in order to be able to guarantee you safety and performance in their application.



#### SPRAYERS MADE OF STAINLESS STEEL

Easy to clean, durable and robust: In addition to its high resistance to impact and wear, the particular advantages of stainless steel are its extraordinary corrosion resistance. With these quality features, the models 505 and 510 meet even the highest demands.

#### QUALITY MATERIAL STAINLESS STEEL

Stainless steel contains at least 10.5% chromium and, thanks to a passive layer that acts as a barrier between the alloy and the media surrounding it, is even more resistant to corrosion than sheet steel. This corrosion protection is not impaired even if the surface is damaged.

# HIGH-PERFORMANCE SPRAYERS MADE OF STAINLESS STEEL

# MADE IN GERMANY

## PROFESSIONAL EQUIPMENT

Made in Germany

The GLORIA high-performance stainless steel sprayers are equipped with a wide range of features that ensure comfort and safety during use. All devices offer helpful detailed solutions and convince by quality and reliability.



### SPRAY TUBE HOLDER AND BRACKET

Protection of nozzle and spray lance against damage and contamination.



### LARGER FILLING FUNNEL

Protection of nozzle and spray lance against damage and contamination.



### INDICATING PRESSURE GAUGE, SAFETY RELIEF AND VENT VALVE

The operating elements and the manometer are protected and integrated in the filling funnel for easy reading.

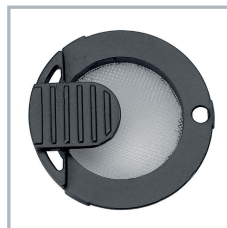


### SPIRAL HOSE

(depending on model or can be retrofitted) 5 m hose length for even more flexibility.



**SPRAY LANCE, FLAT JET NOZZLE AND QUICK-ACTING SHUT-OFF VALVE**  
MADE OF BRASS  
Robust and durable.



**ADDITIONAL FILTER**  
Dirt particles are collected and clogging of the nozzle prevented. After use, the sieve is attached to the container.



**COMPRESSOR CONNECTION**  
(model dependent):  
Constant tank pressure for continuous operation without manual pumping.



### PADDED CARRYING STRAPS OR BELT

Comfortable and convenient even for longer use.



### STORAGE COMPARTMENT

Here spare parts such as nozzles and seals can be stored safely and cleanly.



### PUMP HOLDER

During filling, the pump can be attached to the device.



**HIGH-PERFORMANCE BRASS PUMP WITH INTEGRATED HOSE HOLDER**  
With ergonomically shaped handle and additional holder for attaching the hose.

# HIGH-PERFORMANCE SPRAYERS





## MADE OF STAINLESS STEEL

Made in Germany

The GLORIA Profiline high-performance stainless steel sprayers are convincing due to their durability and corrosion resistance and are therefore the perfect helpers for applying form work oil, cleaning work, pest control or disinfection of sanitary facilities.

For long working intervals without manual pumping, the 505 TK and 510 TK units, which are equipped with an additional connection valve for an electric compressor, are ideally suited. All stainless steel sprayers convince by their oil-resistant design, are extremely easy to clean, work with a maximum operating pressure of 6 bar and are of course TÜV and GS tested.



	505 T PROFILINE	505 TK PROFILINE	510 T PROFILINE	510 TK PROFILINE
<b>ART.-NO.:</b>	000506.0000	000506.2701	000512.0000	000512.2700
<b>EAN CODE</b>	404 643 600 0357	404 643 600 0562	404 643 600 0371	404 643 600 0456
<b>MAX. OPERATING PRESSURE</b>	6 bar	6 bar	6 bar	6 bar
<b>FILLING CAPACITY</b>	5 L	5 L	10 L	10 L
<b>CONTAINER MATERIAL</b>	Stainless steel, rust free 	Stainless steel, rust free 	Stainless steel, rust free 	Stainless steel, rust free 
<b>TÜV AND GS TESTED</b>	●	●	●	●
<b>PRESSURE GAUGE</b>	●	●	●	●
<b>SAFETY RELIEF AND VENT VALVE</b>	●	●	●	●
<b>CARRYING SYSTEM</b>	Padded shoulder strap	Padded shoulder strap	2 padded shoulder straps with quick-release system and back pad	2 padded shoulder straps with quick-release system and back pad
<b>SPIRAL HOSE</b>				
<b>COMPRESSOR CONNECTION</b>		●		●
<b>OIL-PROOF VERSION</b>	●	●	●	●
<b>MATERIAL OF SEALS</b>	Viton®	Viton®	Viton®	Viton®

# WATERFEEDING DEVICE

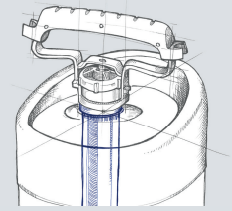
Diamond core drilling machines are frequently used in building and underground construction, in steel construction or for renovation work on facades. These require a continuous supply of cooling water to counteract excessive heat and material wear.

The GLORIA water supply unit type 415 made of stainless steel as well as type 10 made of plastic is characterised by its flexible application possibilities. It can be connected to both hand-held and drill rig guided wet drilling machines as well as to cut-off grinders or similar devices.



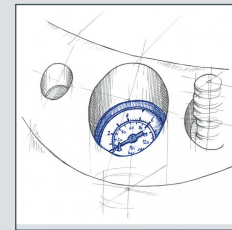
	TYPE 10	TYPE 415
<b>ART.-NO.:</b>	001215.0000	000415.0000
<b>EAN CODE</b>	404 643 602 9846	404 643 600 0326
<b>MAX. OPERATING PRESSURE</b>	3 bar	6 bar
<b>FILLING CAPACITY</b>	10 L	10 L
<b>CONTAINER MATERIAL</b>	Sturdy plastic	Steel sheet with high-quality plastic interior lining
<b>TÜV AND GS TESTED</b>		●
<b>PRESSURE GAUGE</b>		●
<b>SAFETY RELIEF VALVE</b>	●	●
<b>PERMISSIBLE OPERATING TEMPERATURE</b>	+40 °C	+50 °C
<b>ACCESSORIES</b>	4.0 m hose	3.0 m braided hose
<b>MATERIAL OF SEALS</b>	Perbunan®	Perbunan®

## QUALITY IN DETAIL



### HIGH-PERFORMANCE PUMP MADE OF BRASS

All Profiline steel and stainless steel devices are equipped with a powerful and resistant precision pump made of brass.



### PRESSURE GAUGE

An integrated indicating pressure gauge shows the user the operating pressure in the device at any time.

